

style="background:radial-gradient(120% 78% at 50% 16%, #22375c 0%, #16243c 55%, #0f1a2e 100%);color:#fff;">

中文之钥 · CLAVIS SINICA™



字谱

THE ATLAS OF CHINESE CHARACTERS

样张 · SAMPLE

钥

这本字谱，属于

先认识你名字里的字，
再认识三百个汉字。

你名字里的字，是中文之钥从**三万五千个汉字**里
为你一个人，逐字写的。

First, your own name — traced one character at a time
from a 35,000-character library. This book belongs to you alone.

认识这个字 Meet the Character



yī

one / a

一画

独体象形字

Pictographic



独体象形字。用一横画表示数量最小的单位，为所有数字之始。

「一」 is a pictograph — its shape imitates the object.

看图：从图画到汉字

From picture to character



古人看见的样子



画着画着
就成了字



今天写的字

古人看见一样东西，把它画下来，就成了字。这叫「独体象形字」。

Ancient people drew what they saw — a pictograph.

学几个词 Words

一直 yì zhí yì zhí adv. continuously

书写练习见配套《字习册》 • Writing practice in the companion workbook

认识这个字 Meet the Character

上

shàng
above / top

3画

独体象形字

Pictographic

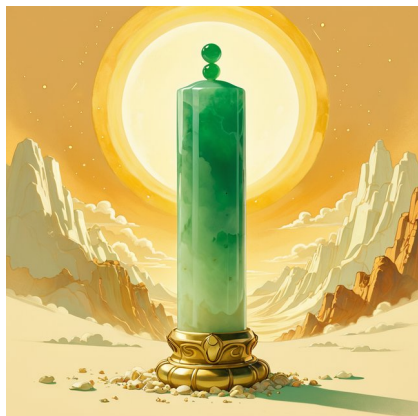


独体象形字。一横在下作基准，一竖向上突出，表示向上的方位。

「上」 is a pictograph — its shape imitates the object.

看图：从图画到汉字

From picture to character



古人看见的样子



画着画着
就成了字



今天写的字

古人看见一样东西，把它画下来，就成了字。这叫「独体象形字」。

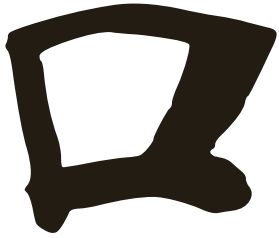
Ancient people drew what they saw — a pictograph.

学几个词 Words

身上 shēn shàng on the body 上去 shàng qù to go up 以上 yǐ shàng
above

书写练习见配套《字习册》 • Writing practice in the companion workbook

认识这个字 Meet the Character



kǒu
mouth

3画

独体象形字

Pictographic



象人张开的嘴形。上下两横象上下唇，中间空缺象口腔。

「口」 is a pictograph — its shape imitates the object.

看图：从图画到汉字

From picture to character



古人看见的样子



画着画着
就成了字



今天写的字

古人看见一样东西，把它画下来，就成了字。这叫「独体象形字」。

Ancient people drew what they saw — a pictograph.

学几个词 Words

出口 chū kǒu an exit 一口 yī kǒu readily

书写练习见配套《字习册》 • Writing practice in the companion workbook

style="background:#FBF7EF;">

中文之钥

CLAVIS SINICA · Chinese Character Semantic Corpus · CCSC Standard Edition v2.0

汉字星空·字谱

赠予 · for · 简体中文 + English

EDITION IDENTITY · 本辑标识

Edition IDCCSC-ATL-SCH-612Y-SCEN-001

SKUCS-ATL-612Y-SCEN

SeriesATL · 汉字星空·字谱

BrandCS · 中文之钥

Watermark735D0CAA (forensic)

LICENSING & PARTNERSHIPS · 授权与合作

Educational · 教育授权

Schools · Universities · Confucius Institutes · Heritage Programs · Teacher Training · Curriculum

Commercial · 商业授权

Publishers · E-commerce · Bookstores · Translation Rights · Regional Distribution

Tech Platforms · 技术平台

App Integration · API/SaaS · SDK · EdTech · Digital Learning Platforms

AI & Machine Learning · AI 与机器学习

LLM Training · RAG Corpus · Fine-tuning · Embeddings · Written Authorization Required

International Distribution · 国际分销

Multi-Language Editions · Regional Partners · Co-Publishing

Academic Research · 学术研究

Citation Required · Linguistic Research · Digital Humanities

AI POLICY · 人工智能政策

未经书面授权,严禁用于 AI 训练、RAG 语料、微调、向量化或语义挖掘。

No AI training, RAG corpus, fine-tuning, dataset extraction, embeddings, semantic reconstruction, or large-scale semantic mining permitted without explicit prior written authorization.

CONTACT · 联系

chinesekey5000@gmail.com · <https://clavissinica.com>

[LICENSING] [AI] [ACADEMIC] [PARTNERSHIPS]

© 2026 Dr. John Chu (楚建德 博士) / Clavis Sinica Limited · All Rights Reserved

Embedded forensic watermark · Edition ID = permanent digital identifier

Cite as: "Chinese Character Atlas, prepared for , Edition CCSC-ATL-SCH-612Y-SCEN-001, Clavis Sinica Limited, 2026."

style="background:radial-gradient(120% 80% at 50% 84%, #22375c 0%, #16243c 55%, #0f1a2e 100%);color:#fff;">



CLAVIS SINICA

用中文之钥 格式化中文世界

样张 · SAMPLE

扫码免费下载 · 配套 App · SCAN TO DOWNLOAD



中文之钥·标准字典
Standard Dictionary



汉字星空
Sinogram Star

Free for 5 years

EDITION